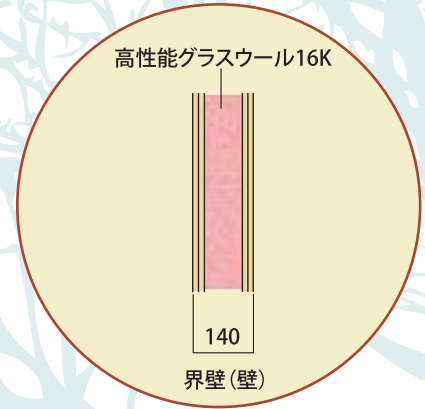
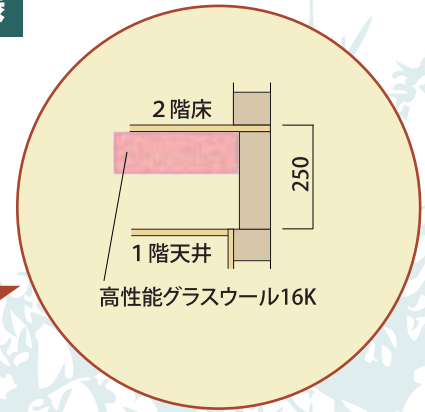
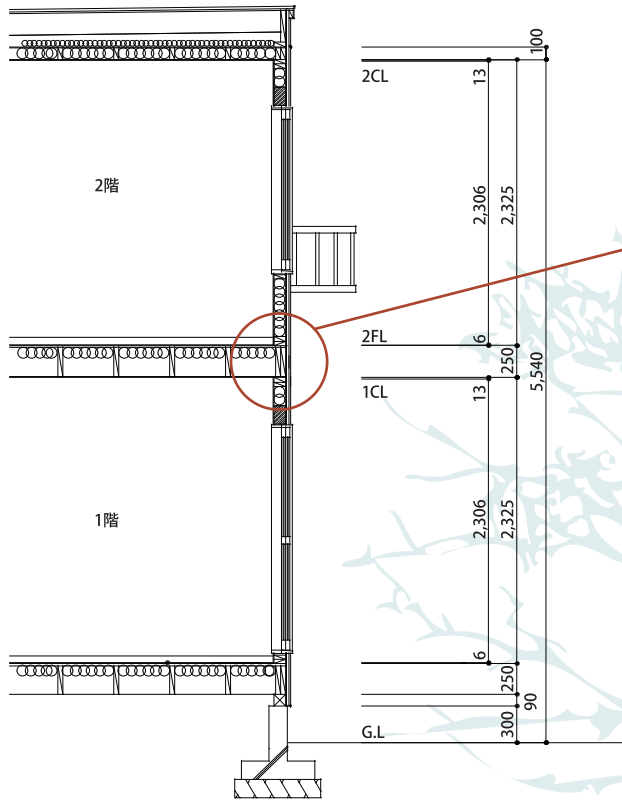


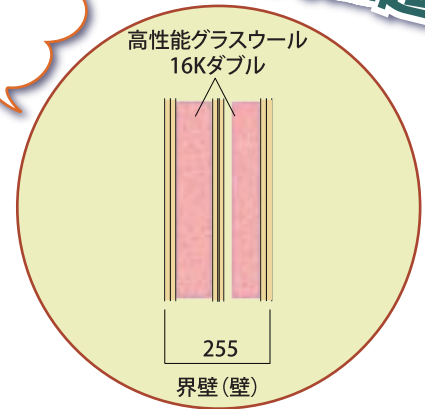
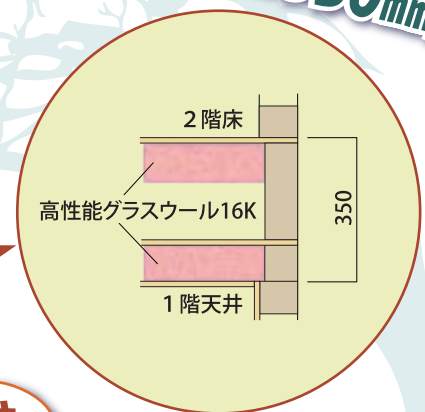
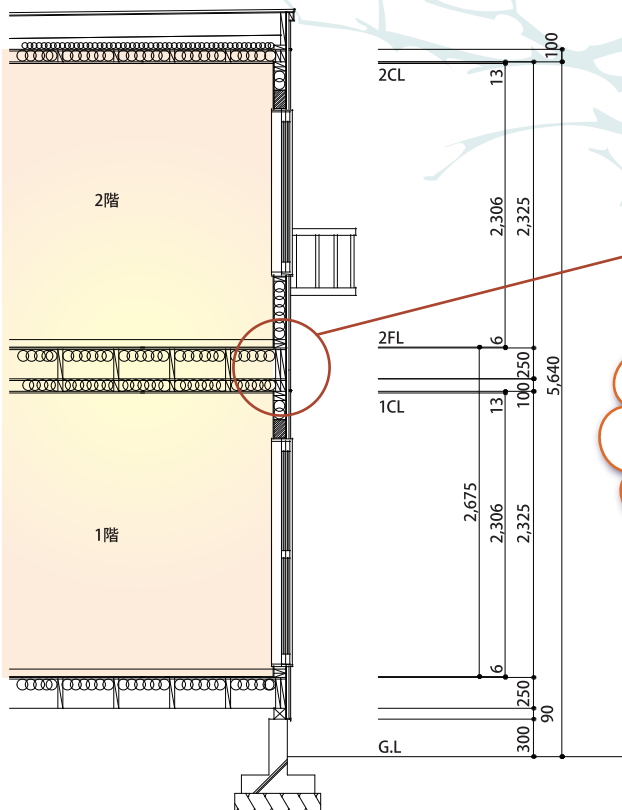


# U & Uの床と壁

## 一般的な2×4工法の界壁(壁)と上下階床の仕様



## U & Uの界壁(壁)と上下階床の仕様



**上下階厚さ350mm超!**

**界壁250mm超!**

**お隣とは  
ダブルの壁で  
遮音性  
抜群!**

※ 図・数字は一般的なおさまりをあらわしています